

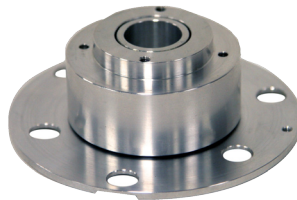
Leslie® 981

The Leslie 981 is one of the most powerful Leslies ever offered. This single-channel Leslie features a two-speed horn rotor coupled to our new heavy-duty design driver, and a massive 15" woofer firing into the bass rotor. The Leslie 981 is powered by a 300-Watt RMS solid-state amplifier with real vacuum tube preamp. The 11-pin and 8-pin sockets provide full connection and onboard control with Hammond Organs, while the 1/4" Audio and Footswitch jacks allow direct connection to other instruments, without the use of a cumbersome floor preamp.

Our newly designed dual-race horn bearing features a spindle base made of one-piece construction, improving rigidity and mounting straightness. With the addition of double row bearings that feature deeper raceway grooves, a greater degree of contact of the bearings and raceway is allowed. This improves both the radial/axial loads and balance, lowering noise levels plus allowing a much smoother action.



Available April 2014



CHANNELS	Single Channel Input
ROTORS	Two-speed horn and bass rotor with 'off' position
SPEAKERS	15" woofer and high power horn driver
INPUTS	11-pin and 8-pin Leslie sockets 1/4" line input jack 1/4" foot switch jack (FS-9H not included)
OUTPUTS	1/4" line output jack suitable to drive a powered sub-woofer
CONTROLS	master volume, bass, mid-range, treble, horn level, and sub-woofer level, adjustable fall & rise times for rotors (screwdriver control), overdrive control for tube distortion
CABINET	red walnut (standard) - traditional and SE models available